

## Annual Chapter Scholarships

The chapter awarded \$12,500 in scholarships to the following recipients at the Annual Meeting on May 20, 2010:

### HIGH SCHOOL CATEGORY

Risikat Ademola

*Southeast Raleigh Magnet High School*

Raven Brown

*Broughton High School*

Dasmier Chambers

*Garner Magnet High School*

Khadijan Diaz

*William G Enloe Magnet High School*

Kasey Hamrick

*Garner Magnet High School*

Erin LePage

*Apex High School*

Maurice Savage

*Wake Forest-Rolesville High School*

Nicholas Savage

*Wake Forest-Rolesville High School*

### RETURNING SCHOLARS CATEGORY

Kathleen Boodee

*University of North Carolina at Chapel Hill*

Bianca Harvey

*Guilford College*

## OPEN YOUR HEART reaches GOAL

By Ann Eberhardt

Two exciting things have happened this year with the OPEN YOUR HEART campaign. Number one, the financial goal was reached. Number two, the campaign had a colorful new look thanks to Pam Warren, Graphic Designer, from Raleigh who created the new invitation.

OPEN YOUR HEART is a direct mail campaign to raise funds for Assistance League® of the Triangle Area programs: Kid's Place at WakeMed, Women in Need (WIN), Scholarships and Operation School Bell® (OSB). The OPEN YOUR HEART fundraiser is one of the most important methods of requesting community support for Assistance League® of the Triangle Area.

The campaign starts in the fall season to allow contributors to take advantage of the year-end tax deductible giving. A donor card has been added which allows contributions to be made in honor of or in memory of special persons.

For example: In lieu of Christmas or birthday gifts, the donor can now make a tax deductible donation to OPEN YOUR HEART in another person's name. A response letter is sent to that person informing them of the donation.



With generous contributions from members and the community, the chapter has been able to expand Kid's Place at WakeMed, Women in Need (WIN), Scholarships, and Operation School Bell®.

Kid's Place at WakeMed Children's Emergency Department provides a room equipped with games, books, toys and teddy bears. To date over 380,100 children have enjoyed reading and playing at the facility.

Women In Need (WIN) partners with The Women's Center of Wake County. The Center is a day shelter for women who are in crisis. Chapter members prepare and serve hot lunches monthly. The chapter also provides laundry vouchers, bus tickets, emergency lodging and other supplies to the center. To date, over 10,500 women have been assisted by this program.

*continued on page 2*

**BOARD OF DIRECTORS**

Karen Schindler  
*President*

Sharron Grant  
*President-Elect*

Becky Aldrich  
*VP Resource Development*

Margaret Pasquale  
*VP Membership*

Kathy Faust  
*VP Philanthropic Programs*

Callie Underwood  
*Secretary*

Martha Funsten  
*Treasurer*

Janice Carlton  
*Education*

Margaret Cohen  
*Public Relations*

Phyllis Sullivan  
*Strategic Planning*

**ADVISORY COUNCIL**

Ralph Bartell  
*Retired Executive*

Susan Boisseau  
*Lydia's Gifts and Interiors*

Debra Bynum, MD  
*University of NC Hospitals*

Sharon Delaney McCloud  
*McCloud Communications*

John McIlwee  
*NCSU Theatre*

David Stirling  
*Market Vue Partners*

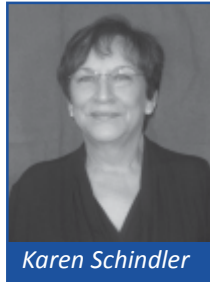
Pamela Weksler  
*Southern Community  
Bank and Trust*

Jim Wright  
*Retired Sr. Attorney, Sprint*

**Newsletter Editors**

Krista Park Berry  
Gail Park

## The President's Message



*Karen Schindler*

What a great year we have had! It is hard to believe that it is almost over. As we entered our 14<sup>th</sup> year, it was time to evaluate our existing programs to ensure that we are still meeting the needs and challenges of our community. The Strategic Planning Committee has completed the evaluations and made necessary recommendations. The Bylaws Committee took on the very big job of updating our Bylaws, Standing Rules, and Chapter Policies. Several new policies and procedures were written and put in place. The Public Relations Committee also had many successes this year. We were on the television show "My

Carolina" to talk about our work with Operation School Bell®. Our Speaker's Bureau was formed and our first presentation was done by Margaret Cohen to Raleigh realtors.

Due to the generosity of our members we were able to give additional support to help The Women's Center recover from the flooding of the center.

Our Thrift Shop is doing very well and always looks great! This is due to the countless hours contributed by members as well as the generosity of our supporters. The chapter's fundraising efforts, which include grants and our annual Open Your Heart campaign, have done very well with meeting their goals for the 2010-2011 fiscal year.

Finally, the Scholarship Committee is reviewing and evaluating the scholarship applications to determine who this year's winners will be. These will be awarded at our final luncheon in May.

I am so thankful for all that our members have done!  
Please take a bow because you are truly the best!

Sincerely,

Karen Schindler

*continued from page 1*

The Scholarship program selects Triangle Area students in need of financial assistance and awards scholarships of \$1,000-\$2,500 to students who will attend North Carolina colleges and universities. Eighty students have now received this assistance.

Operation School Bell® is a program which provides new clothing, shoes and school supplies to children in need living in Durham, Orange and Wake counties. This program has served over 8,300 children.



Established in 1997, **Assistance League® of the Triangle Area** is a 501(c)(3) non-profit volunteer organization serving the Triangle Area of North Carolina (Raleigh, Durham and Orange Counties) and is also a chapter of National Assistance League®.

With nearly 80 members volunteering over 15,000 hours and no paid staff, the chapter is dedicated to meeting the needs of the Triangle community through service, resources and financial support. Visit us online at [www.altriangle.org](http://www.altriangle.org)

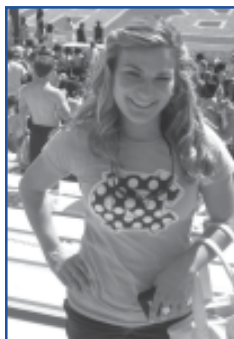
# Reflections from a First-year Scholar

By Erin LePage, 2010 scholarship recipient

My name is Erin LePage, and I am a freshman at the University of North Carolina Chapel Hill. As a high school senior, I was privileged to be chosen as a recipient of one of the Assistance League of the Triangle Area scholarships. This scholarship has impacted me in several ways my first year in college: especially in the aspects of schoolwork and family.

Being in college is a full time job, especially here at UNC Chapel Hill. Every teacher gives such an enormous work load it seems like they think we are only taking their class. Being a full time student, you have to take over 12 credit hours per semester. You are expected to work two hours outside of class for every hour you are in class. The majority of my day is spent doing assigned work. Yes, I am only in class an average of three hours a day and going into college I remember thinking, "What am I going to do with all my free time?" The answer was study.

Several of my friends have jobs on top of school work. I cannot imagine having time to work, study, go to school, and be able to achieve high grades. This scholarship has given me the freedom to focus only on my studies, which has helped maintain a high grade point average. Having a high grade point average is necessary for being an exemplary candidate when applying to nursing school my junior year. This scholarship is helping me achieve my dream of becoming a nurse.



Erin LePage

Another way this scholarship has impacted my college life relates to my family. For the past two years, my dad has been without a job. In this economy, it is not unusual, but it is still a hard way to live. As the older of two children, I was the first to go to college. College is in no way inexpensive during these times. It is incredible how UNC continues to have budget cuts, yet students' tuitions are being raised.

Some people may think that scholarships don't make an impact when they are small, but it all adds up. With tuition rising by 6.8% next year, your scholarship has helped cover these costs. My dad is continuing to search for a job, but it puts both his and my mind at ease to know this scholarship is one less loan we will have to take out and eventually pay interest on. This also means that after graduating from UNC and moving on to pay all my own bills, this will be one less financial commitment.

Thank you for awarding me with a scholarship from Assistance League of the Triangle Area. It has impacted both my schoolwork and my family's finances. It is opening many doors for me in the future because I am able to focus on studying and not be concerned about taking out loans I will have to pay off in the future.

## 2010 Business and Foundation Donors

Due to the generosity and assistance from the following businesses and foundations, the goals of the chapter will continue to be met. Thank you for your continued support.

Gipson Family Foundation

Anonymous Foundation

NVIDIA Corporation Employees

PestPro

Mortex Apparel

Wake Electric Care Foundation

Durham Merchants Association  
Charitable Foundation

Kids 'N Community Foundation

Raleigh Board of REALTORS-  
Community Service

Raleigh Regional Association of  
REALTORS-Top Producers  
Council

Redwoods Group Foundation

Southern Community  
Bank & Trust

Talecris

Wal-Mart at Brier Creek

If you, your organization or your business would like to support the efforts of the chapter, visit [www.altriangle.org](http://www.altriangle.org) for more informaton.

# Operation School Bell® 2010

By Shelley Stirling

First of all, thank-you to everyone who helped to make this year's effort such a success. Members, volunteers from the community and friends all worked together to provide help to hundreds of children.

This year new shoes, clothing, school and health supplies reached students in need living in Orange, Durham and Wake counties. These supplies included; sneakers, hooded sweatshirts, jeans, shirts, underwear and socks, age appropriate health items and school supplies delivered in

colorful backpacks. As in past years, hand knit scarves were also given to the girls.

This year, the number of children the program served who were homeless increased. In these cases we acted promptly to see that these children's needs were met, providing them with new clothing, shoes and supplies.

We also continue to serve our three pilot schools providing clothing, school and health supplies. If funds allow, we will add a new school next year. In addition to our pilot schools, we have several other



**Three students are fitted for new shoes as part of the Fall 2010 Operation School Bell® program.**

schools on the waiting list. Please stop by the Thrift Shop or volunteer to help at one of our schools. Believe me, the smiles and laughter will be contagious!

## Mentoring New Members for Service and Support

By Janice Carlton

This year our President, Karen Schindler, identified mentoring as one of her goals. When a new member joins our chapter, there is so much happening and loads of information that they need to have at their fingertips. Recently, I heard a new member attending her first meeting say, "Goodness, there is so much going on here!" The Education Committee saw the need and was interested in making this a reality. Judy Spears stepped up to chair the mentoring program this year.

Mentoring is simply a relationship in which a more experienced member helps and guides a new

member. A mentor is a person who shares knowledge and experiences, provides guidance and support, and helps them develop into a successful, comfortable volunteer.

Organizations having a mentoring program have indicated that such a program helps new members feel comfortable, enables new members to become engaged in activities, and enhances satisfaction for a new person to feel a part of the organization.

When each new member attends orientation, they are encouraged to participate in mentoring. A list of members who are interested in

mentoring has been developed for them to select a person to be their mentor, or they may have already met a member they would like to be their mentor.

Recently a member who has been in the chapter for nearly two years was asked if she was ready to stop having a mentor and she said, "No, she has helped me so much that I want to keep this friend and mentor."

With this example, one can quickly see that mentoring is important and will continue to be a part of the Education Committee of Assistance League® of the Triangle Area.

# 'Shop Talk' at the A to Z

Antiques to Zippers Thrift Shop ~ 1689-A North Market Drive, Raleigh, NC ~ (919) 875-8901

The Antiques to Zippers Thrift Shop has just completed its fourth year. Thanks to Assistance League members and the community's support the shop continues to be the major fundraiser for the organization.

Our annual Baubles and Bag sale in October and a Holiday Party Night in December were two highlights of the year. The November sales were \$10,451.56 which surpasses the monthly goal of \$10,000.00.

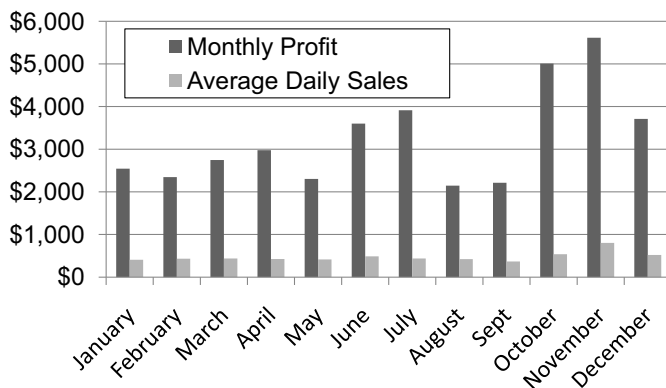
We look forward to continued support at the shop to be able to help others in our community.

**Thank You to all of our patrons.**



**Chapter member Grace Fox sorts through newly arrived donations in the Book Nook at the Thrift Shop.**

## 2010 Monthly Profits and Daily Sales



## 2010 Shop Volunteers of the Month

January: Martha Funsten  
February: Connie Ludviksen  
March: Kathy Faust  
April: Ruth Rice  
May: Sharron Grant  
June: Linda Weiner  
July: Ann Cole  
August: Gail Park  
September: Ellen Lehman  
October: Dee Walker  
November: Mayrene Castleberry  
December: Lois Thornhill

## Member Socials and the Annual Meeting Luncheon

By Karen Perry

Assistance League® of the Triangle Area members celebrated the holiday season at the Wood Valley Swim and Racquet Club House on Sunday, December 5, 2010. It was an enjoyable evening with 71 members and guests attending.

On March 17 of this year we had a special Pot Luck Luncheon after our monthly meeting. We celebrated our 14<sup>th</sup> year of service to the community. Our honored guests were husbands who have supported us in multiple ways

throughout the year. We wanted to acknowledge their contributions to our chapter.

This year's Annual Meeting and Luncheon will be held May 26 at the N.C. Museum of Art when we will be honoring this year's scholarship recipients. This is also when the chapter's Leadership Award and Founder's Award winners are announced. In addition, the installation of the 2011-12 Board of Directors will take place.

## Kid's Place Finds Comfort

By Ruth Rice

Chapter members continue to support Kid's Place, which is located in the Children's Emergency Department at WakeMed Hospital by providing 1000 soft, cuddly teddy bears to be used to comfort children who need to undergo particularly difficult or frightening procedures and tests.

Additionally, "National Geographic" and "Highlights for Children" subscriptions were purchased and Treasure Chest and educational toys were supplied.



Toddlers play with the donated teddy bears at Kid's Place.

## Wonderful Outstanding Women and Good Egg Awards

By Jean Ehmke

Presented quarterly, the Wonderful Outstanding Women (WOW) awards were started very near the beginning of this chapter. They were created to recognize one woman who was doing outstanding work with Assistance League programs for a period of time.

Judy Spears: For her outgoing personality and amazing "forward thinking" ideas. She has worked with scholarships, community sharing and OSB. Her "make-it-work" attitude gives everybody around her the calmness and patience to get through challenging situations. She led the Purple Elephant initiative by setting the guidelines, calculating values, and delivering computer equipment. WOW from Anna Merrett.

Ellen Czinege: For her constant dependability and long time support. She is a charter member who can always be

counted on to do what is needed to be done and to do so with a smile on her face. As co-chair of the Community Sharing Committee, she has provided a strong voice in developing strategies to accomplish our goals. WOW from Dee Walker.

The Good Egg award was also created at the beginning of the chapter's formation-ha, which came first? It is a light-hearted award for outstanding service over a short period of time.

Karen Perry: She scrambled to do something productive while she was recovering from her surgery by making ornaments for the Thrift Shop Christmas tree. Most of us would have been watching Lifetime and eating green eggs and ham! That is eggsactly the kind of person she is. Good Egg Award from Beverly Buttaci.



P.O. Box 98477  
Raleigh, NC 27624

---